

Gascoigne Greening Project - a greener and more pedestrian friendly estate



Raised table at entrance to slow cars.

New trees to soften entrance space.

All existing paving repaired. Modular block paving used around tree pits and as edging.

Modular block paving used for raised tables and vehicle over run areas

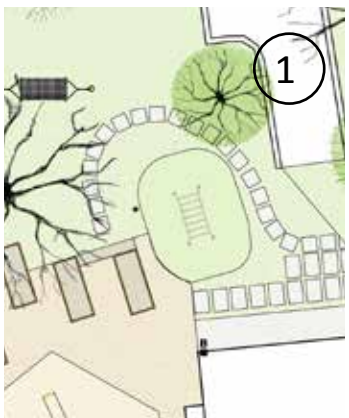
Existing Trees

Existing tree to be removed

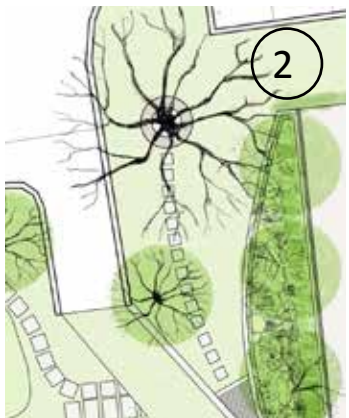
New trees

Bike racks

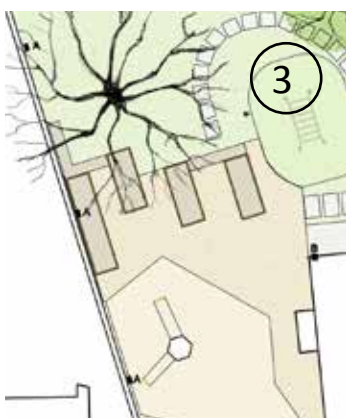
Relocated existing bike lockers



Upgrade play area with monkey bars.



Bow top fencing removed to open up space. Planting with a grove of crab apple and fruit trees creates a new social space outside the Hut including a picnic table and seating. Stepping stone path to semi-circular tree seat. Wildlife friendly hedging along railings around Dunmore Point.



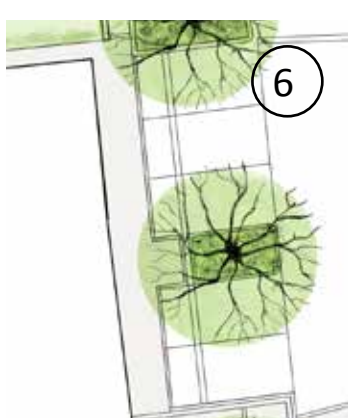
Upgrade existing play equipment and replace sandpit with vegetable growing beds. Remove railings to open up circulation. Creates a small social space behind the Hut and connects the growing space with play area. Rainwater butt.



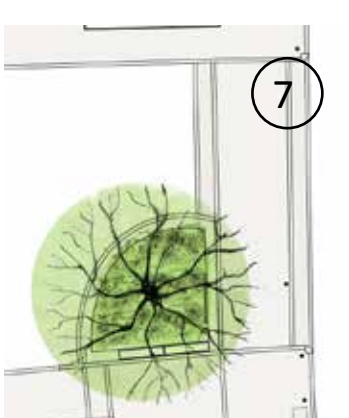
New garden space with railings to south. Garden contains a swing and a replacement springie see-saw with low play grass mound. One multi stem Pyrus Calleryana to be removed to improve sight lines through to behind the Hut. (poor specimen) Planting as low visual screen from parking area.



Negotiations are ongoing with Genesis Housing Association to improve sight lines through alley by straightening out the wall. New wall lighting all along boundary wall with Mildmay estate.



Five parking places retained outside Dunmore Point to allow for possible relocated unofficial disabled parking bays lost in entrance redesign. Space for three disabled bays or five standard bays. No residents who currently have a parking permit will lose their space.



Entrance upgraded with new tree, planting and seating. Existing growing space upgraded with bespoke pergola for climbing plants. Pergola extended over entrance to underground car park to allow climbing plants to provide screening.

green dreams
landscape architects

Ore Place Farmhouse
Hastings, TN34 2RA
t: 0771 444 3221
e: julia@greendreams.org.uk
w: greendreams.org.uk

Project	Date	Drawn by
Gascoigne Greening	20/8/20	JH
Drawing title	Scale	
Outline Plan revised Aug 2020	NTS	
	Drg No	
	GD-GG-01G	