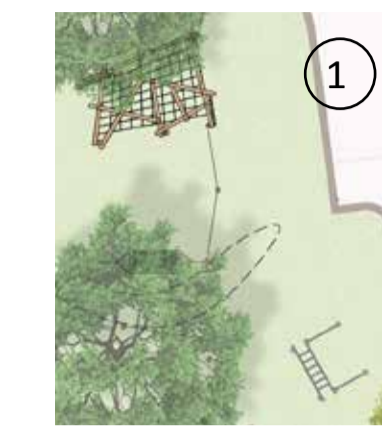


# Gascoigne Greening Project - a greener and more pedestrian friendly estate



- Raised table at entrance to slow cars.
- New trees to soften entrance space.
- Raised tables to prioritise pedestrians over cars.

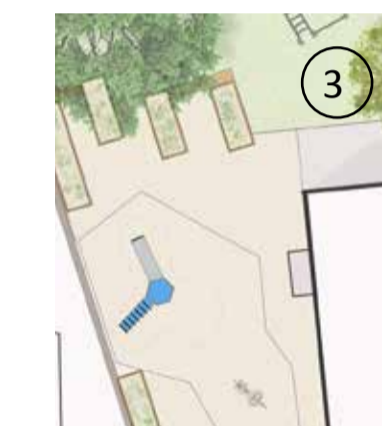
- Existing Trees
- New trees - forecourt
- New small blossom trees
- Lights
- Bike racks



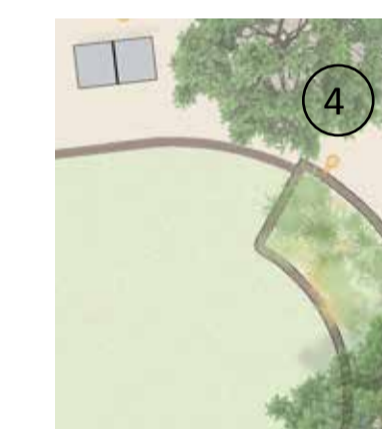
1 Upgrade play area with monkey bars, climbing nets and balance bars. See play sheet for options.



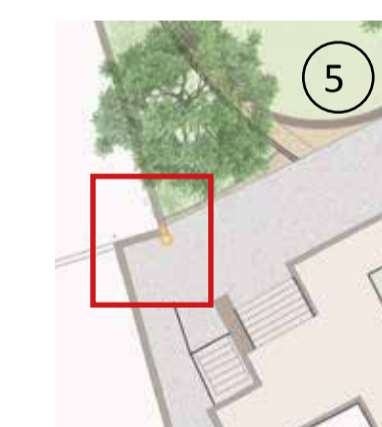
2 Bow top fencing removed to open up space. Planting with a grove of crab apple and fruit trees creates a new social space outside the Hut including picnic tables and seating. Stepping stone path to circular tree seat. Wildlife friendly hedging along railings.



3 Upgrade existing play equipment and replace sandpit with vegetable growing beds. Remove railings to open up circulation. Creates a small social space behind the Hut and connects the growing space with play area.



4 New garden space with concrete table tennis table and wildlife friendly shrub planting. Raised planter as low visual screen from parking area.



5 Negotiate with Genesis Housing Association to improve sight lines through alley by straightening out wall. Improved lighting here and to north and south of the Hut. Upgrade existing chicane barriers to include signage welcoming people to Gascoigne Estate and the new pocket park



6 Rain gardens created both around existing trees and new trees. Rain gardens improve bio-diversity, help with summer cooling and reducing storm water run off.



7 Extended pedestrian space with new trees, planting and seating. Existing growing space upgraded with bespoke pergola for climbing plants. Pergola extended over entrance to underground car park to allow climbing plants to provide screening.

		Ore Place Farmhouse Hastings, TN34 2RA T: 0771 444 3221 e: julia@greendreams.org.uk w: greendreams.org.uk	
		Project <b>Gascoigne Greening</b>	Date 7/11/19
Drawing title <b>Outline Plan</b>		Scale NTS	Drg No GD-GG-01A